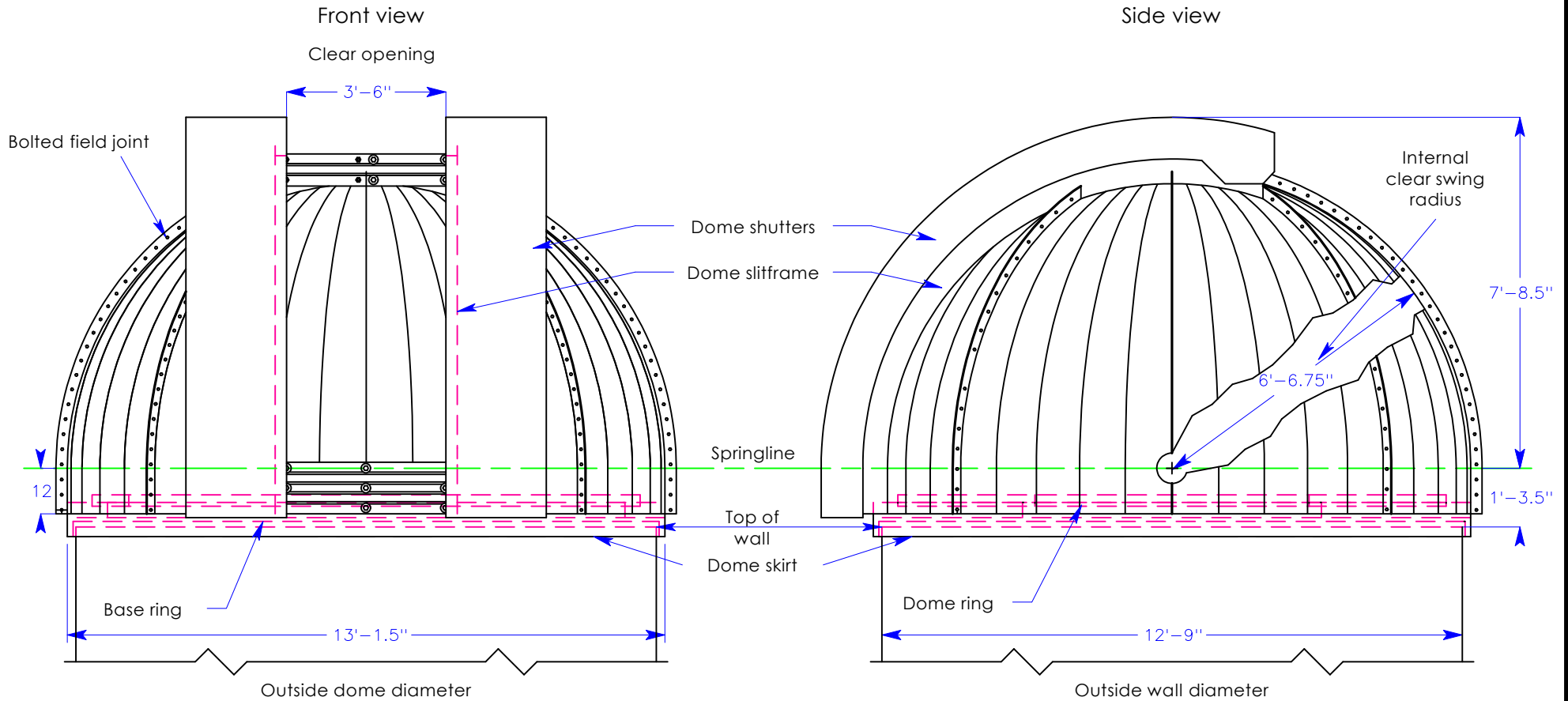


4 Meter Observa-Dome



Features:

1. All aluminum skin construction.
2. Factory tested to allow easy field assembly.
3. Proven bi-parting shutter design.
4. Fabricated steel base and dome tension rings.
5. Factory installed computer automation package available

Approximate weights for .063" thick 3003 aluminum skin.

Single skin rotating weight	1420 lbs, 644 kg
Double skin rotating weight	1800 lbs, 816 kg
Base ring weight including casters	350 lbs, 159 kg



Observa-Dome Labs, Inc
 371 Commerce Park Drive
 Jackson, MS 39213
 1-800-647-5364
 observa-dome.com

	Name	JJ	Date	6/11/02	Title	4 Meter Elevation	Date	June 11, 2002	Scale	1:40
	Created By	JJ	Date	6/11/02	Drawing No.	OBD 4 100	Revised			
	Checked By	RC	Date	6/21/02						