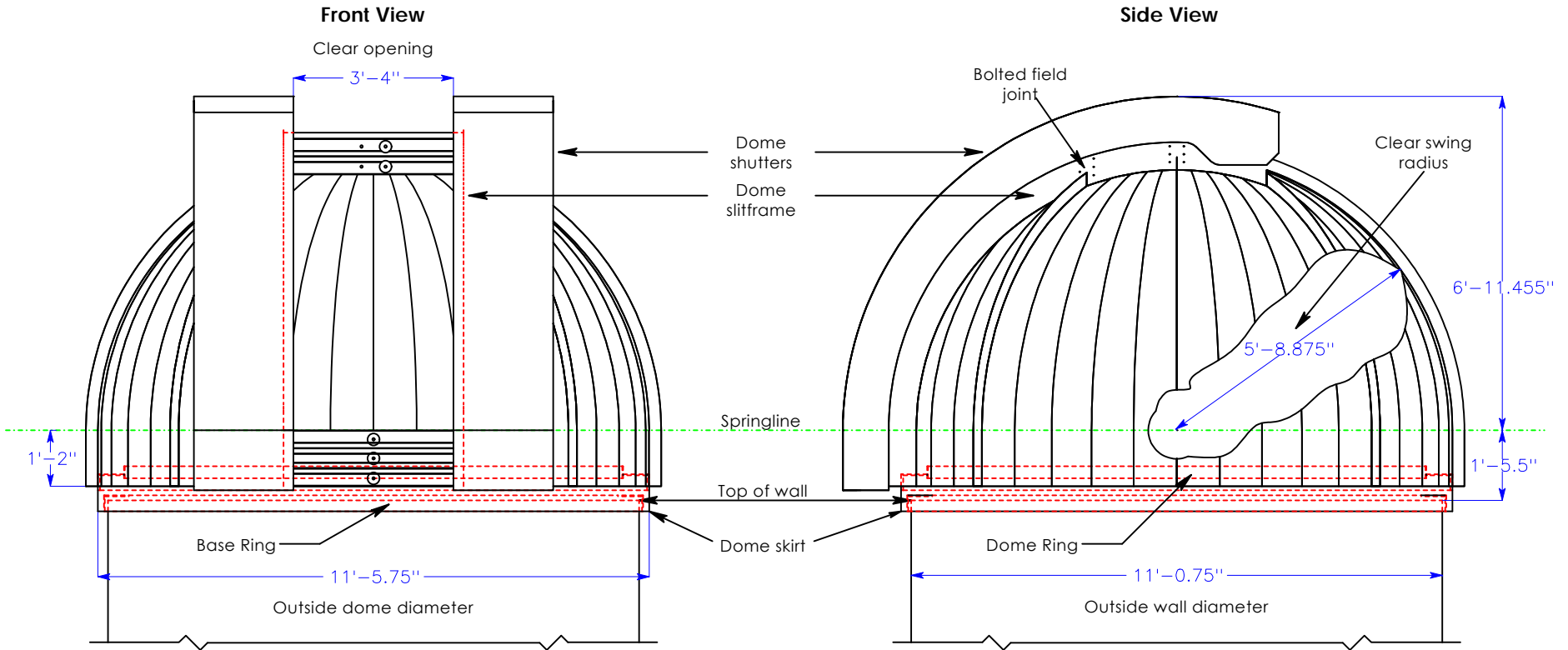


3.5 Meter Observa-Dome



- Features:
1. All aluminum skin construction.
 2. Factory tested to allow easy field assembly.
 3. Proven bi-parting shutter design.
 4. Fabricated steel base and dome tension rings.
 5. Factory installed computer automation package available

Approximate weights for .063" thick 3003 aluminum skin.

Single skin rotating weight	1032 lbs / 468 kg
Double skin rotating weight	1200 lbs / 545 kg
Base ring weight including casters	300 lbs / 136 kg



Observa-Dome Labs, Inc
 371 Commerce Park Drive
 Jackson, MS 39213
 1-800-647-5364
 observa-dome.com

	Name	Date	Title	3.5 Meter Elevation	Date	February 23, 2004	Scale
Created By	JJ	2/23/04	Drawing No.	OBD 3.5 100	Revised		1:40
Checked By	RC	2/23/04					