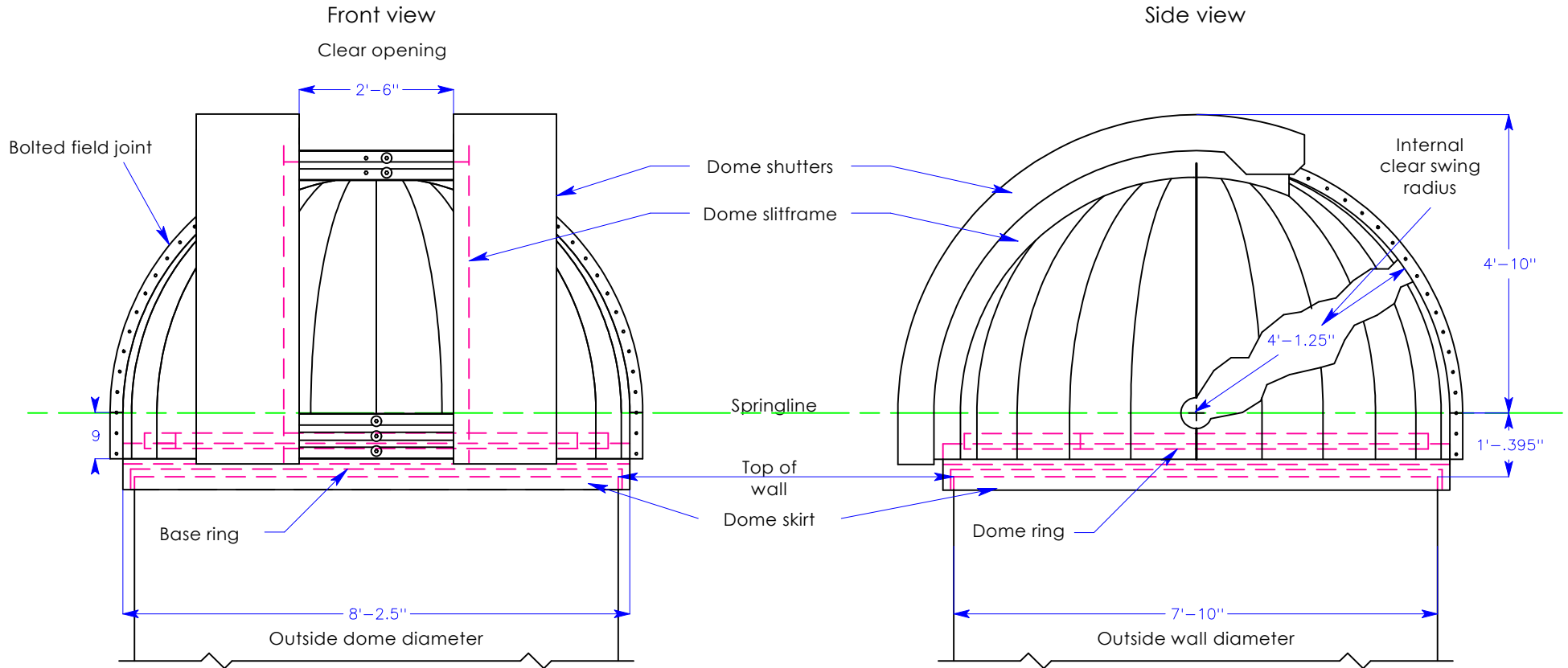


2.5 Meter Observa-Dome



Features:

1. All aluminum skin construction.
2. Factory tested to allow easy field assembly.
3. Proven bi-parting shutter design.
4. Fabricated steel base and dome tension rings.
5. Factory installed computer automation package available

Approximate weights for .040" thick 3003 aluminum skin.

Single skin rotating weight	550 lbs, 249 kg
Double skin rotating weight	700 lbs, 318 kg
Base ring weight including casters	200 lbs, 91 kg



Observa-Dome Labs, Inc
 371 Commerce Park Drive
 Jackson, MS 39213
 1-800-647-5364
 observadome.com

	Name	JJ	Date	6/6/02	Title	2.5 Meter Elevation	Date	June 6, 2002	Scale	1:30
	Created By	JJ	Date	6/6/02	Drawing No.	OBD 2.5 100	Revised			
	Checked By	RC	Date	6/21/02						